



Medium Series

PD175V

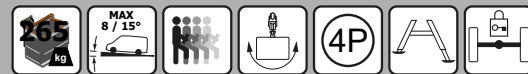
Telescopic platform with articulated boom
mounted on van or chassis



Standard equipment



Extra equipment/Options



The range of available options depends on the vehicle.



Technical specifications*

| | |
|-----------------------------|---------|
| Max. working height: | 17.2 m |
| Max. outreach: | 9.8 m |
| Cage load capacity: | 230 kg |
| Total weight: | 5500 kg |
| Payload capacity: | 1000 kg |
| Platform rotation: | 460° |
| Safe working angle: | 2°/5° |
| Isolation: | 1000V |

* Exact specifications vary based on the individual build and chosen options.

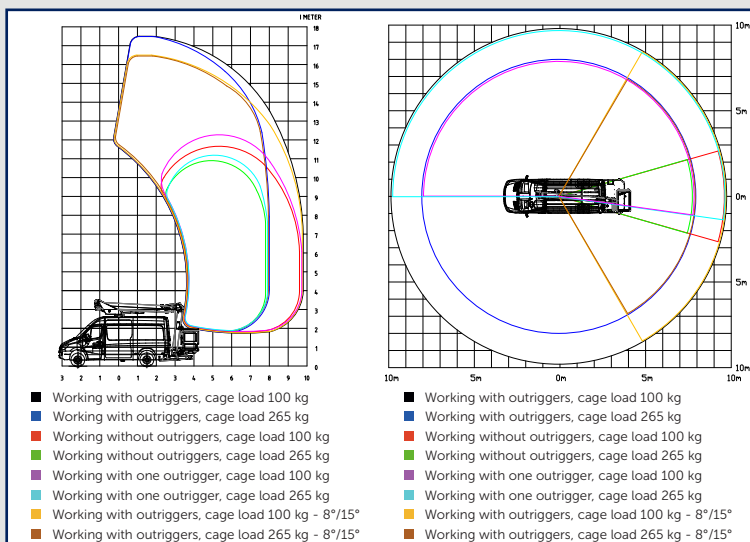
Description

The Medium Series is slightly more sturdy than the Light Series. The Medium Series platforms have sensors on all functions, making it possible to fully utilize the workspace. They come with a max. cage capacity of 265 kg, and have a 175° movable cage boom, and cage rotation of 2x80° is an option. The PD-series comes with a memory function for different settings as well and it has lots of possibilities when it comes to options.

Additional specifications:

Short wheelbase. Total weight from 5 tons. 175° movable cage boom. OD-type outriggers. Large cargo space. Galvanized subframe. Electric/hydraulic control. Home function. Operating without outriggers. Outriggers can be deployed even when the platform is not in transport position. Various warning lights. Ramp up/down functions on booms ensuring a long service life.

Diagrams



Images



The images in this literature may show options. Danilift A/S reserves the right to change technical information without notice.